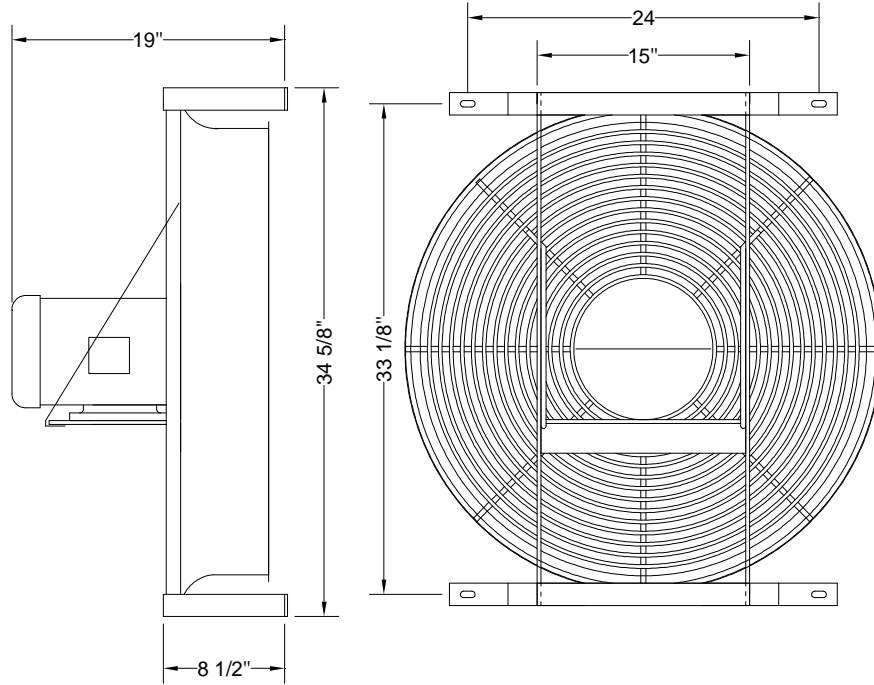


CFMASTER

31" DIAMETER J-SERIES COOLING FAN

Fan Dimensions:



Fan Ratings:

Model #	JCF31P460B
HP (kW)	1-1/2 (1.12)
Hz	60
RPM	1160
CFM*	14100
dbA** @ 6 ft	71
dbA** @ 10 ft	66
WT.-LBS.	135

Electrical Data:

HP (kW)	1-1/2 (1.12)	
RPM	1160	
Volts	208-230/460	
Phase	3	
Hertz	60	
Amps	Running/ Nameplate	5.7-5.6/2.8
	Starting/ Locked Rotor	35/32/16
	Power Factor	0.59

Guard: Galvanized steel venturi type with inlet and discharge guard. OSHA compliant (all openings are less than 1/2")

Motor: Totally Enclosed Fan Cooled, 182T Frame, TEFC, Class B insulation, 40° C Ambient-Continuous, foot mount, ball bearings able to be relubricated, Gasketed conduit box

Propeller: Three die cast aluminium blades, true airfoil design, taper-lock hub



* Test Method: AMCA 210-99, fig. 12/ ISO 5801, fig. 71b, fan installation type A, free inlet and free outlet. Other impeller arrangements will affect the performance.

** Sound levels listed here were determined under laboratory conditions. Many factors can influence fan sound levels that are beyond the control of the propeller manufacturer or California Turbo, Inc; including inlet geometry and obstructions in the airflow. Please use this information for comparison purposes only.

NOTE: Electrical and noise data are supplied by the motor and propeller manufacturers, respectively. These values have not been independently verified by California Turbo, Inc. California Turbo, Inc. reserves the right to make product changes from time to time, without prior notification.

M3607T/30.5/3-9/4514ZL/SK 1.25X0.25/BR/2 Threaded, 3 Clearance/SS HDW



CALIFORNIA TURBO, INC.

10721 Business Drive Fontana, California 92337-8233

www.californiaturbo.com

(909)854-2800

info@californiaturbo.com

Form Code: LEE001

(909)854-2801 fax

9/8/08